

HEALTH CARE WASTE IN THE PUBLIC SECTOR



P. Brits

**DIRECTOR: HEALTH CARE WASTE & OCCUPATIONAL HYGIENE RISK
MANAGEMENT**

GAUTENG DEPT.OF HEALTH & SOCIAL DEVELOPMENT (PROVINCIAL)



SCOPE



- Background
- Status quo
- Organogram development and constraints
- Contract management challenges
- Training of employees
- Illegal storage and dumping
- Limited facilities to accommodate waste generated
- Communication with regard to legal action

BACKGROUND

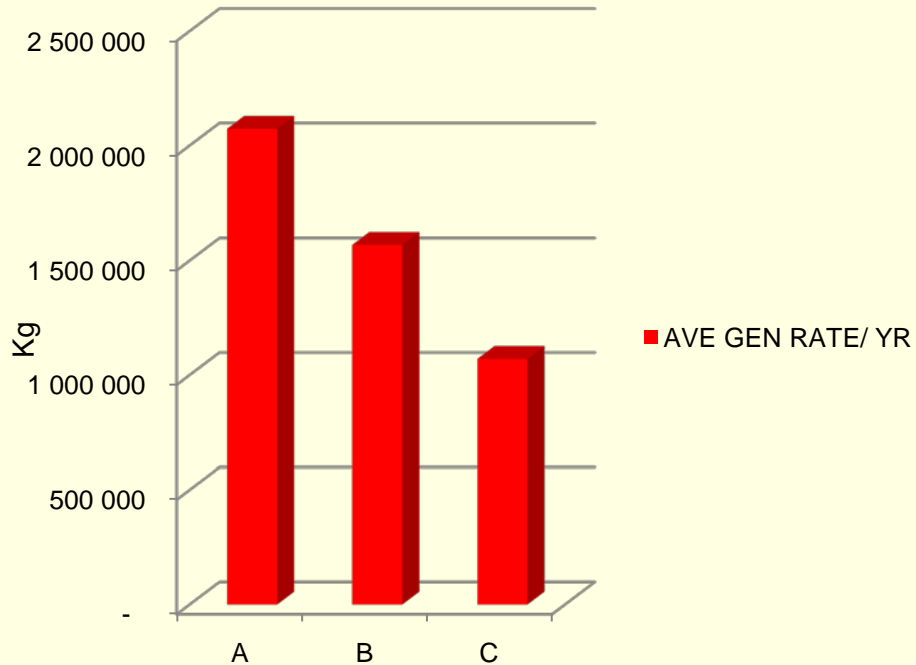


- The Health Care Waste - Contracted parties (2).
- Currently 5th extension until end of June 2011.
- Proposed tender – period of 2 year with additional 1 year dependent on performance.
- Categories of waste which are managed:
 - General Infectious waste
 - Pathological waste
 - Chemical waste
 - Pharmaceutical waste
 - Extraordinary waste
 - Sharps

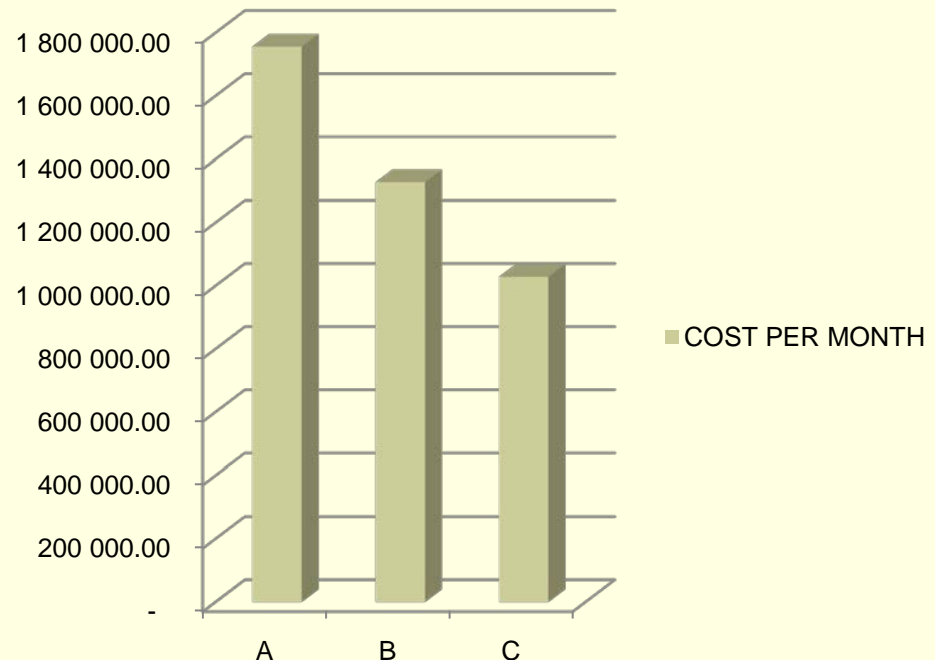
STATUS QUO



AVE GEN RATE/ YR



COST PER MONTH

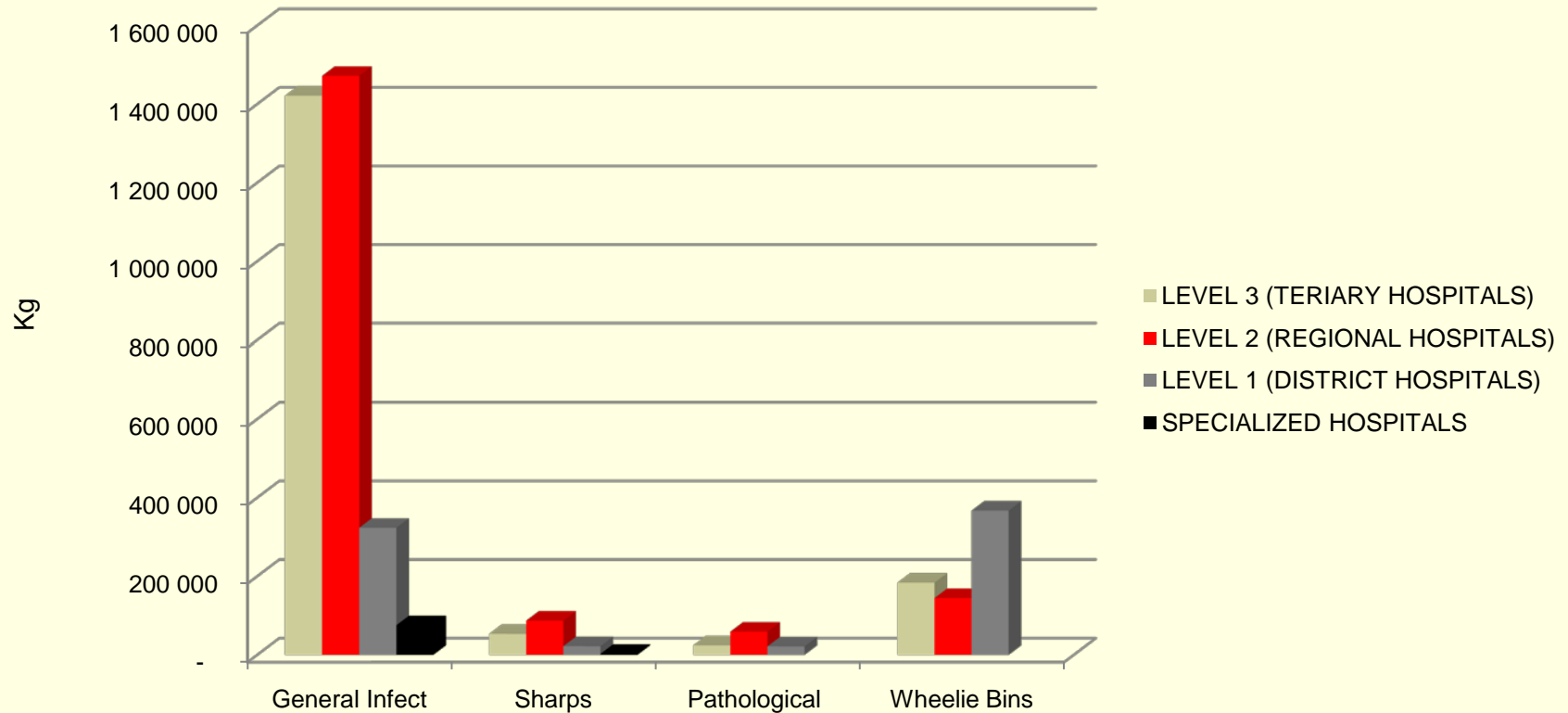


Number of facilities per region:

- Region A = 159
- Region B = 152
- Region C = 95

Total - 406, includes hospitals, Clinics, Mortuaries, EMS, Dental, Laundries, VCT and Medical supply depot

STATUS QUO....



Data set 2009

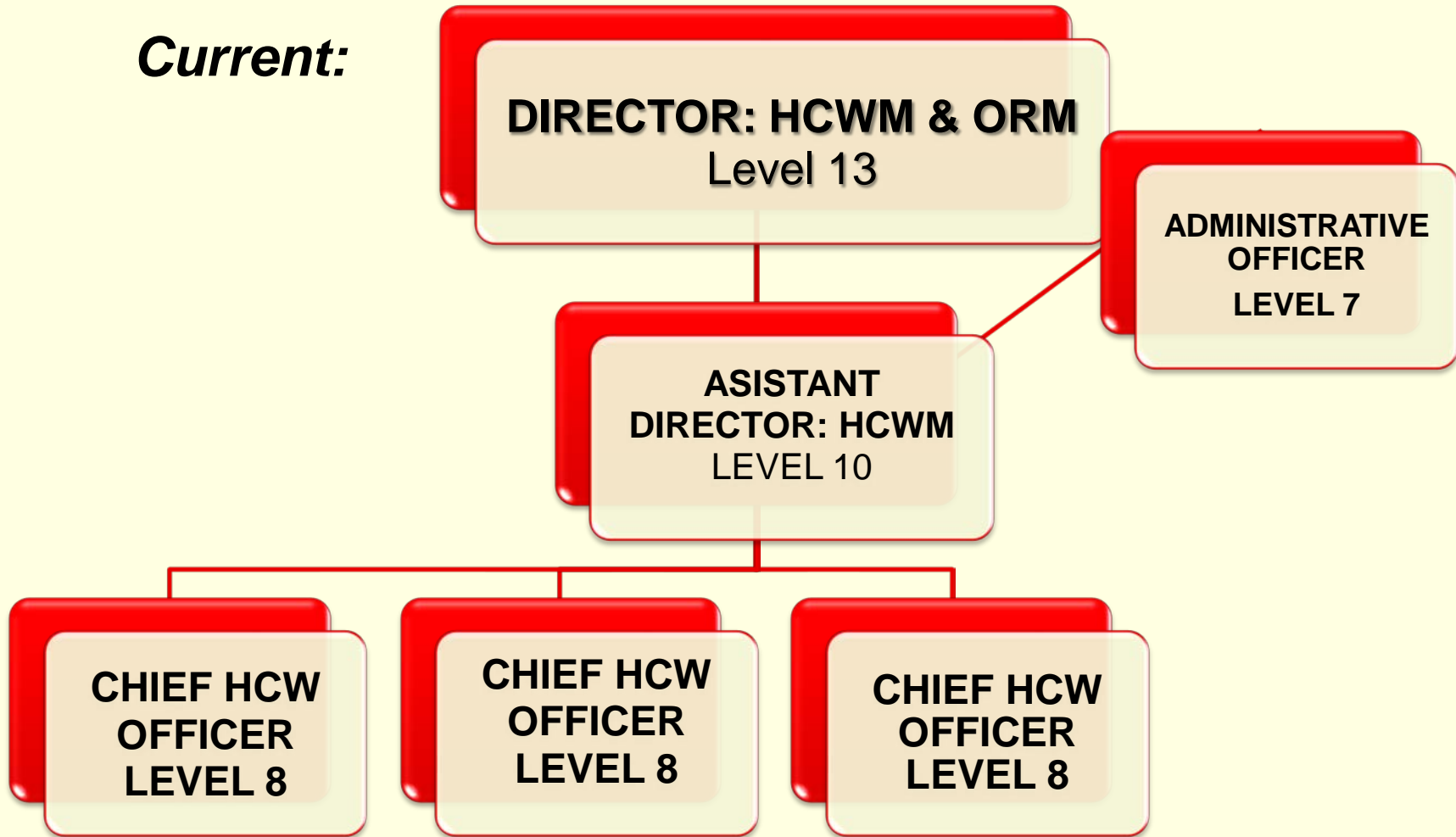
- L3 – 8
- L2 – 11
- L1 – 4
- Spec – 8

A joint presentation by P. Brits , K. Jansen and L. Ngomane
©Accenture 2001 All Rights Reserved

ORGANOGRAM DEVELOPMENT



Current:

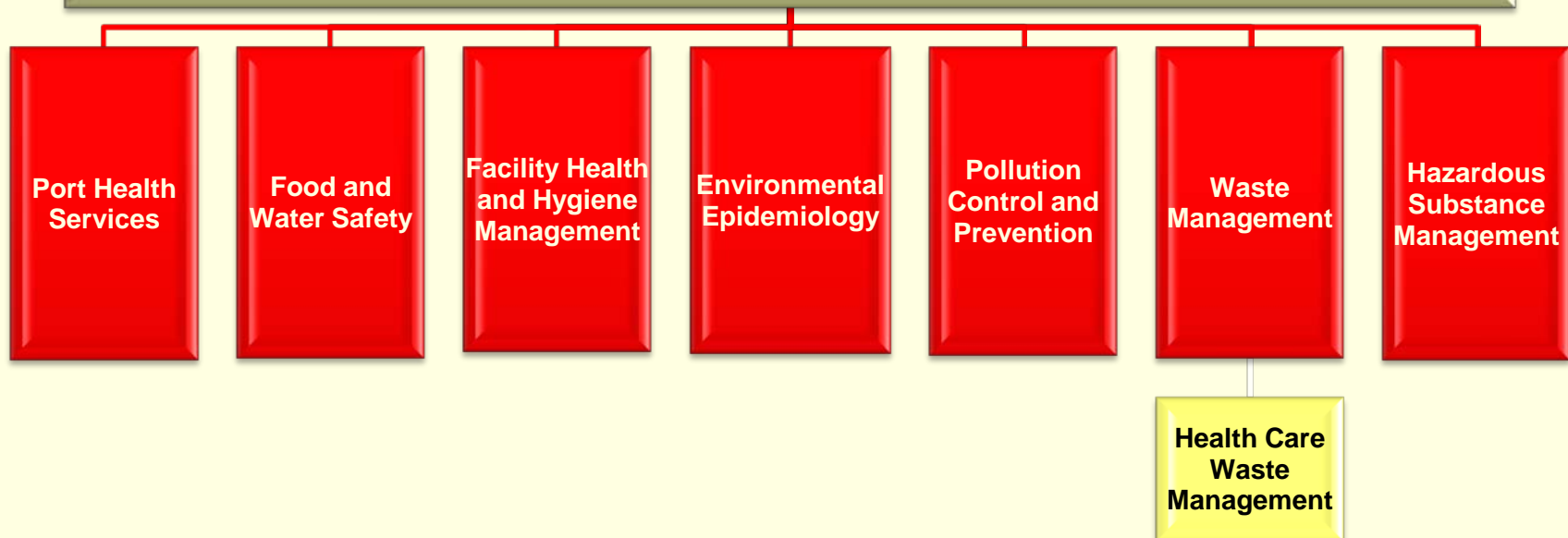


ORGANOGRAM DEVELOPMENT

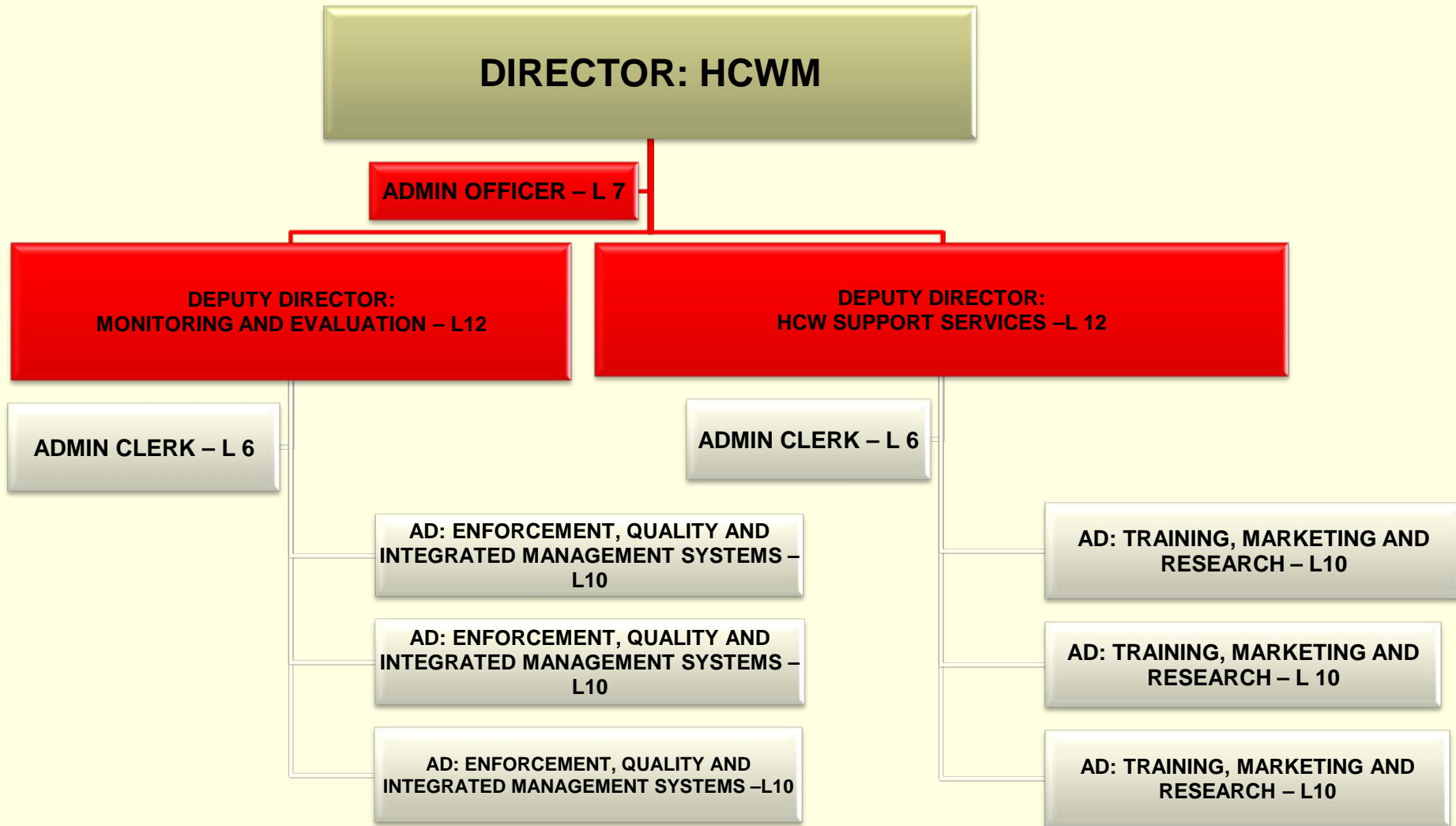


ALIGNMENT: Health Programs and Policies in this regard. National policy for Environmental Health as set out by the National Department of Health.

The National Health Act (Act no. 61 of 2003). Health Professions' Act, 1974 (Act no. 56 of 1974).



HEALTH CARE WASTE MX – Proposed Structures



CONTRACT MANAGEMENT CHALLENGES



- Contract management from the departments view:
 - Route mapping.
 - Late or none notification - Change of treatment plant by Service Providers.
 - Container quality testing – Cost.
 - No/very little guidance from NDH at that stage.
 - Rollout delay due to previous legal actions.
 - Lids of containers – Fitment.
 - Size of main storage area – Cannot accommodate waste for longer than 3 days.
 - Authorization delay - Provision of main storage areas at L.A premises (Funding).
 - Treatment delay – Overfilling of main storage areas and legislative storage timeframes

CONTRACT MANAGEMENT CHALLENGES continue...

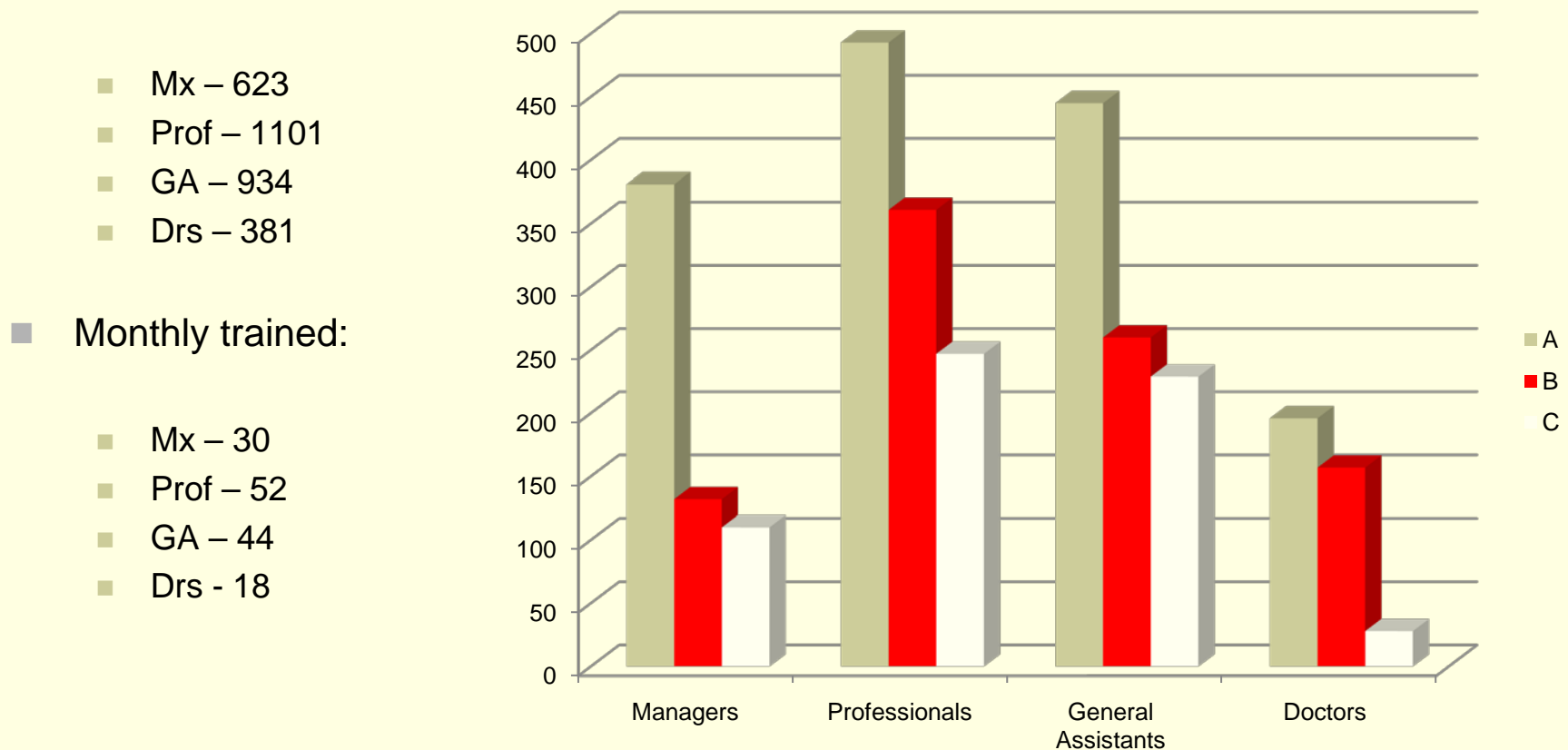


- Contract management from the service providers view:
 - Time spent at facilities - Collection and signature of responsible person.
 - Incorrect containerization.
 - Improper sealing of boxes.
 - Stock ordered only when stock is finished.
 - Access to main storage area after 16h00.
 - Transporters – Access to treatment plants
 - Delays in payment

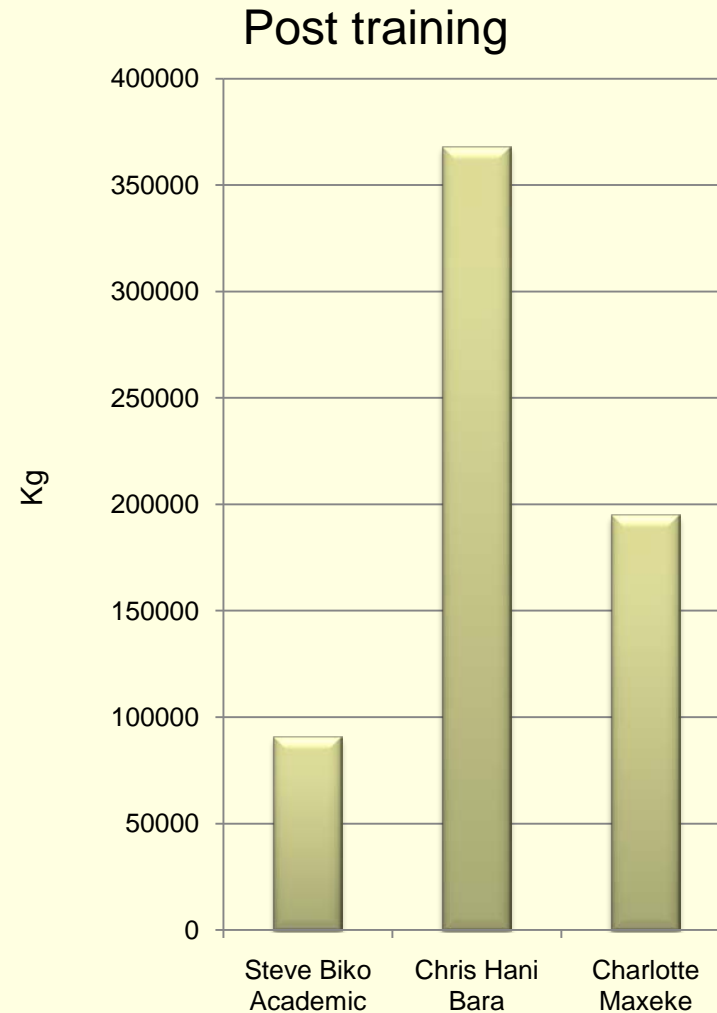
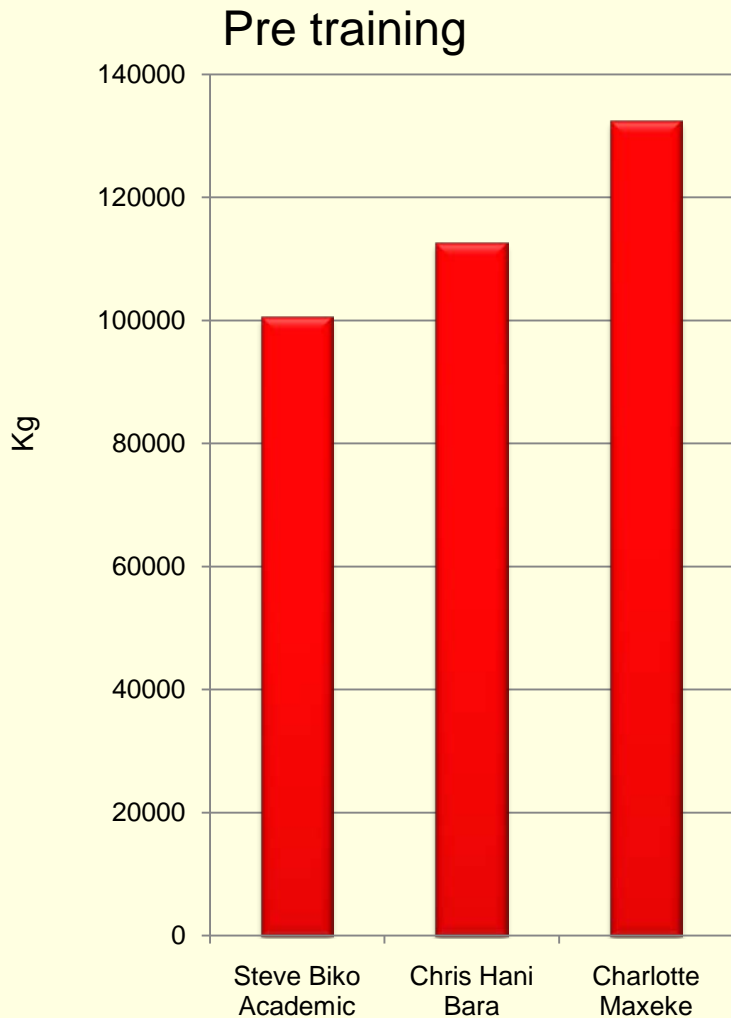
TRAINING OF EMPLOYEES



- Current contract – A total of 3039 was trained in 21 months from May 2007- February 2009.



EFFECT OF TRAINING ON GENERATED HCW



ILLEGAL STORAGE AND DUMPING



- Illegal storage -
 - 2 of the original 3 service providers were reprimanded for illegal storage.

- Illegal dumping:
 - 3 scenarios –
 - Dec/April 2007 – Sedibeng/Ekurhuleni
 - 2009 – Near Dr. George Mohair Hospital in Soshanguve
 - Dec 2009 – Free State – Welkom.

ILLEGAL STORAGE AND DUMPING



Sep 06, 2010

Mail & Guardian online [Search]

HOME NEWS OPINION BUSINESS SPORTS ARTS LEISURE EDUCATION REPORTS LEADERS MULTIMEDIA NEWS DAY JOBS TENDERS PROPERTY SHOPPING DATING

MAIL & GUARDIAN ADVERTISING SERVICES MAIL & GUARDIAN ARCHIVE MAIL & GUARDIAN CONTACT US MAIL & GUARDIAN ABOUT US LOG IN SIGN UP MY DASHBOARD

EMAIL [] PASSWORD [] [X] Remember me? [Log In] Forgot password? Create a new account

THE SMART NEWS SOURCE | Sep 06 2010 09:07 | LAST UPDATED Sep 06 2010 09:07 | ADVERTISE WITH US | CONTACT US | STORY TIPS | OFFS | M&G NEWSLETTER

INVESTIGATIONS | LATEST

Medical waste firm pleads guilty

ADRIAAN BASSON & YOLANDI GROENEWALD | JOHANNESBURG, SOUTH AFRICA - Sep 03 2010 07:31

1 comment | Post your comment

ARTICLE TOOLS

- Add to Clippings
- Email to friend
- Print

MORE TOOLS

- Add to Facebook
- Add to Muli
- Add to delicio.us
- Blog Reactions

LATEST ARTICLES IN THIS SECTION

- Medical waste firm pleads guilty

Sponsored Media Releases

[Press Offices V]

- Jasco to increase client offering, grow to a Ribu group through proposed acquisition of Spescom
- Microsoft partners get their day in the sun
- Microsoft SA
- MTN signs MOU with M-cretele community
- MTN

Publish press releases on the M&G

Web

twitter

Follow the M&G

- @mailandguardian
- Top stories & new flashes
- @NicDawes
- M&G editor Nic Dawes
- @ChrisRoperZA
- Editor, M&G Online
- @mabhungane
- The M&G Centre for Investigative Journalism
- @mgfeed
- Our whole news feed

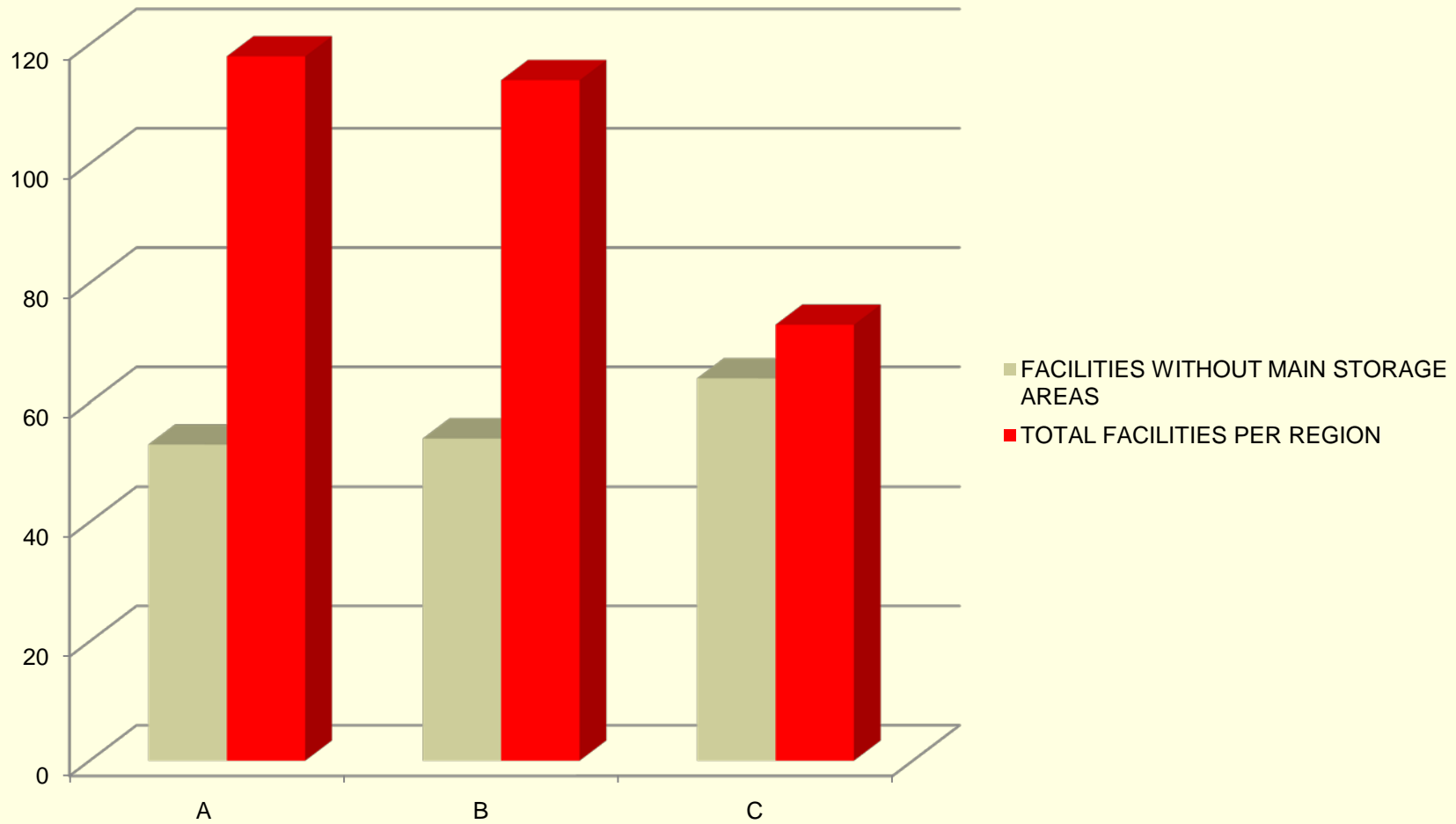
THIS WEEK'S PAPER

Mail & Guardian

UPHEAVAL

Fine of R 2 milj.

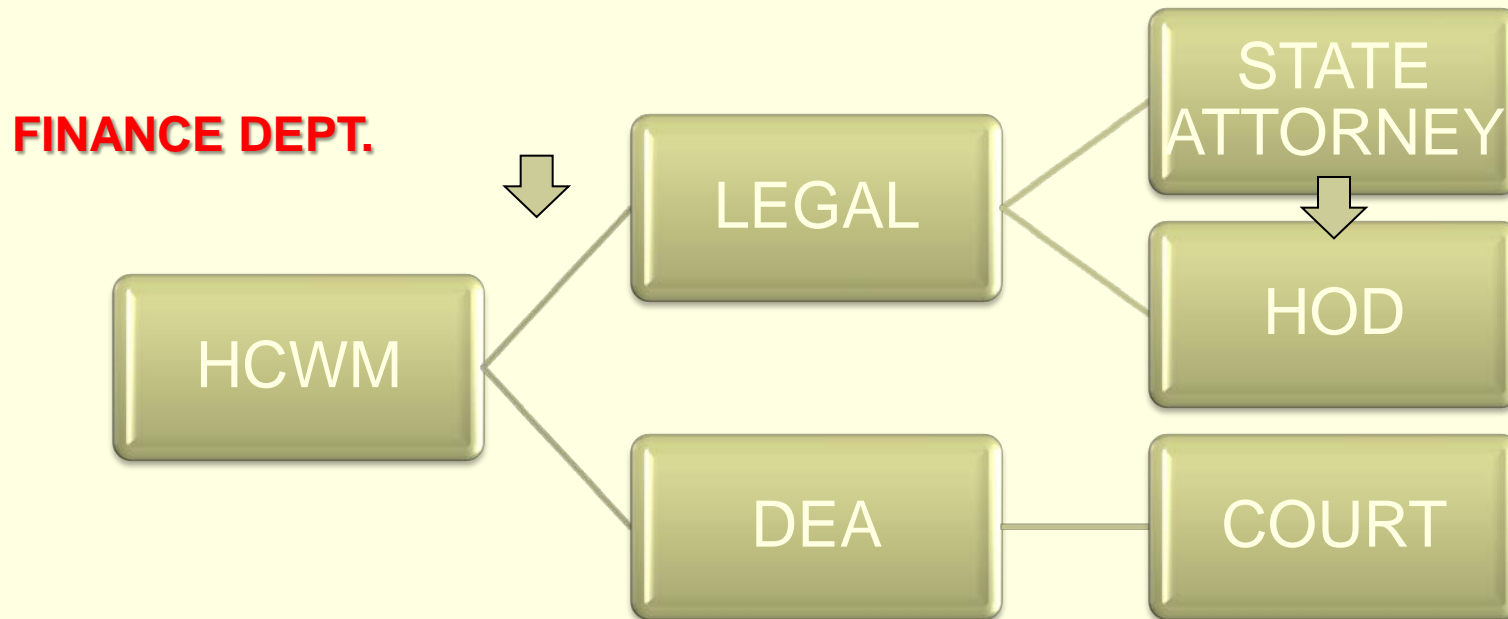
LIMITED FACILITIES TO ACCOMMODATE WASTE GENERATED



COMMUNICATION WITH REGARD TO LEGAL ACTION



- Internal process flow with regard to legal issues:



CONCERN: No official report back – generators or contracted parties.



***Cradle to grave management of
HCW stays the responsibility
of the GENERATOR.***

Thank You.